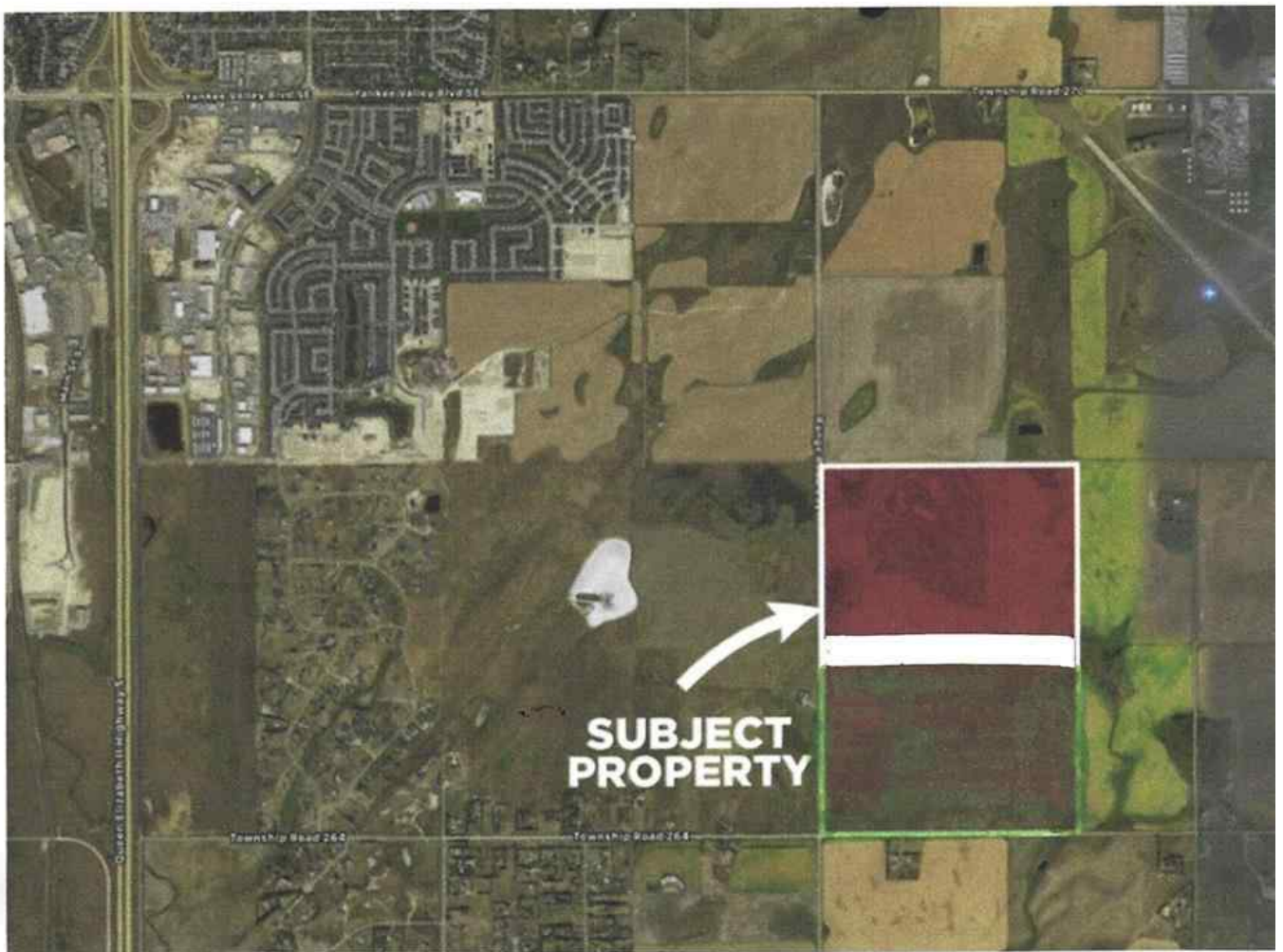




**MLS®-C4290235 - Range Road 292 W-4 R-29 T-26 S- NW -  
\$3,680,000**



**Province**  
Alberta

**Price**  
\$3,680,000



[Kelly McKelvie](#)  
Royal LePage Benchmark  
[kelly@themckelviigroup.com](mailto:kelly@themckelviigroup.com)  
P: 403-247-9988  
M: 403-247-9988

160 ACRES OR 64.7 HECTARES RAW LAND INSIDE BALZAC ANNEXATION. SOUTH EAST OF THE CITY OF AIRDRIE AND NEXT TO AIRDRIE AIRPORT. GREAT INVESTMENT LAND OR SUB-DIVISION POTENTIAL. East of Queen Elizabeth 11 Hwy - East on Township Road 270 - 1 km South on Range Road 292. South West of Airdrie Airport.- This land is extremely well situated to benefit from the expansion around it. With each major announcement, the land becomes more valuable. The MD of Rocky View has set records for development in an effort to meet strong real estate demand in the surrounding areas.



[Kelly McKelvie](#)  
Royal LePage Benchmark  
[kelly@themckelviigroup.com](mailto:kelly@themckelviigroup.com)  
P: 403-247-9988  
M: 403-247-9988